

Datasheet

LIONTRON LiFePO4 Smart BMS 12.8V 200Ah under seat

Drop-In replacement for lead batteries with maximum service life.

LIONTRON LifePO4 batteries are a full 12V lead battery replacement with all the advantages of lithium iron phosphate. It offers a significant weight reduction, enormous energy reserves and stable voltage even under extreme loads.

The storage battery has been specially developed to fully meet the high demands placed on a storage battery today. Highest safety and a long life span are guaranteed even with regular deep discharges thanks to the latest lithium technology. It enables an extremely high cycle life (over 3000 cycles at 90% DoD) and makes the LIONTRON® batteries the optimal traction battery.

The battery is only suitable for 12V installation. A parallel connection to increase the capacity is possible (serial connection to e.g. 24V is not possible).



Integrated Bluetooth monitoring

Always know your battery status.

With the integrated Bluetooth 4.0 monitoring, you always have all important battery data in view on your smartphone or tablet. Among other things, the app displays the following data in real-time:

- Battery state of charge in % (SoC)
- Battery voltage
- Charge / discharge current
- Remaining capacity
- Battery temperature
- Number of charge / discharge cycles
- Rated- / capacity

To connect the battery and a smartphone / tablet, the device must support Bluetooth version 4.0.

Secure lithium technology

Absolutely safe and maintenance free.

Our batteries are based on lithium iron phosphate technology (LiFePO4). This is currently the safest lithium technology. In addition, our customized housings and electronics increase safety and durability. Each battery consists of a high-performance lithium iron phosphate (LiFePO4) accumulator and an integrated battery management system, or BMS for short.

This constantly monitors the status of the individual cells and protects them against overcharge, overvoltage and overtemperature, among other things. Early failure of the storage tank due to environmental influences or incorrect use is prevented in advance by the BMS.

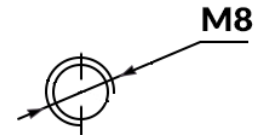
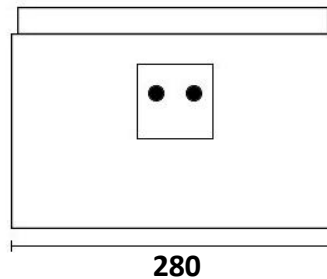
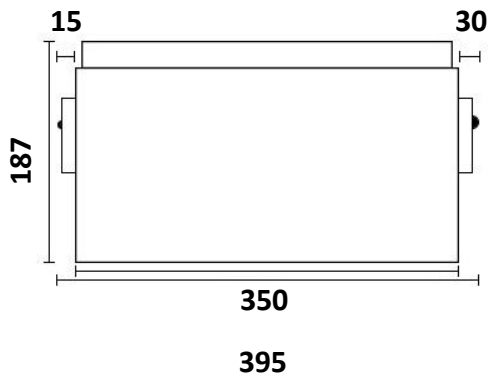


Bluetooth App Download
<https://liontron.com/downloads/>



Technical data

LIONTRON LiFePO₄ Smart BMS 12.8V 200Ah under seat



Connection: M8

Model	LIDUCSM12200LX
EAN / GTIN	4260586370355
Rated capacity	200Ah / 2560Wh
Voltage range	11.0 .. 14.6V
Rated voltage	12.8V
Cycle life	≥3000 @90% DoD
Charge characteristic	CCCV / IU
Bulk voltage	14.2 – 14.6V
Float voltage	13.5 – 13.8V
Recommended max. charge current	100A
Max. charge current	150A
Max. discharge current	150A
Pulse discharge current (≤20Sek.)	200A
Battery Management System	integrated
Monitoring	Bluetooth 4.0 with Smartphone App
Application	12V installation, parallel connection only
Protection class	IP65
Temperature (discharge)	-20°C .. +60°C
Temperature (charge)	0°C .. +45°C
Temperature (storage)	-40°C .. +60°C
Arctic Upgrade	optional, for usage up to -30°C
Terminal	M8, screw
Terminal arrangement	Positive terminal left
Warranty	7 years manufacturer warranty
Weight	23.9 kg
Dimensions (L x W x H) in mm	395 x 280 x 187